



FireWALL 63/120/S56



ceiling systems

partitioning systems

opening systems

flooring systems



Durban
(031) 563 7307
Pietermaritzburg
(033) 345 3701
Gauteng
(031) 563 7307

Distributors:

Zululand
Above All Ceilings & Partitions
(035) 751 1956
Northern KZN
SAIBA Industries (Pty) Ltd
(034) 375 6051
South Coast
Southgate Ceilings & Partitions
(039) 314 9021
East London & Border Area
Almex East London
(043) 736 6334
Northriding, Johannesburg
C+T Ceilings & Partitions Warehouse
(011) 704 6224
Centurion, Pretoria
C+T Ceilings & Partitions Warehouse
(012) 653 3531
Alrode, Johannesburg
Supertec Ceilings and Board
(011) 868 4901



Visit our website on
www.pelican.co.za
Email info@pelican.co.za

creating environments



Pelican Systems fire resistant JUMBO® boards are specially developed to offer superior fire resistance performance when used as cladding on drywall partitions.

Pelican Systems has expanded the JUMBO® range to include a Fire rated solution; our JUMBO® FireWALL 63/120/S56 has successfully passed the two hour fire test.

The two hour test is particularly aggressive and requires the wall to withstand fire-side temperatures in excess of 1000°C. The Pelican JUMBO® FireWALL comprising of two 15mm JUMBO® Fire Resistant boards on either side of a 63mm JUMBO® Stud successfully passed the required two hour test without any insulation being used in the cavity.

Features and Benefits

- Lightweight construction
- Easy, fast and dry application
- 2 Hour fire rating achieved
- Excellent sound insulation performance - 56 Rw DB
- JUMBO® FR board contains glass fibre additives to maintain the integrity of the board for longer time periods when exposed to fire
- Environmentally friendly
- Limitless design options

In addition to these benefits JUMBO® FireWALL 63/120/S56

is unlike competitive systems and weighs less than 48 kg/m² offering a substantial 10% saving in weight which contributes significantly to further lowering building costs and increasing load bearing capacity.

JUMBO® 15mm Fire Resistant Plasterboards

Sizes	Weight / Board (kg)	Quantity / Pallet	Mass / Pallet (kg)
2700 x 1200 SE	36.94	50	2236
3000 x 1200 SE	41.04	50	2445

Board Weight 15mm - 11.4 kg/m²

SANS FIRE TEST

JUMBO® Fire Wall 63/120/S56 was tested and successfully passed SANS 10177-2, fire testing of materials, components and elements used in building Part 2:

Fire resistance test for building elements.

Fire Systems are rated to withstand a fire under test conditions for a certain period of time. This is known as the fire resistance level (FRL) and consists of three main evaluation criteria:

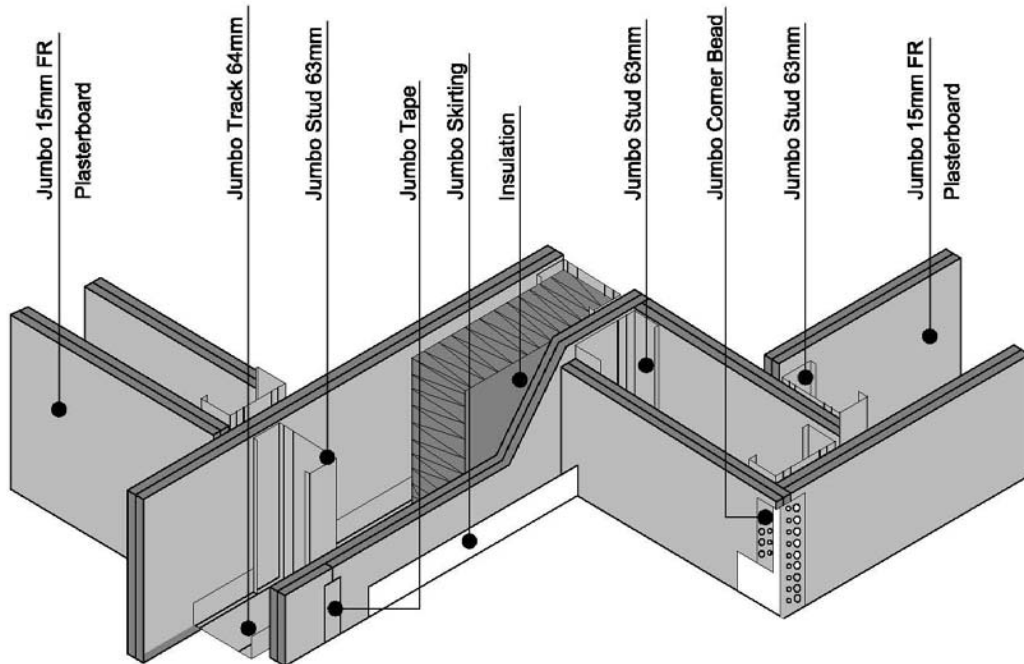
- 1) Stability: The ability to maintain stability
- 2) Integrity: The ability to resist the passage of flames as specified
- 3) Insulation: The ability to maintain a temperature over the whole of the exposed surface below that specified in the test standards.

Test report number FTC 12/101b concludes 'The Pelican drywall specimen as tested achieved a Fire Resistance Rating of 120 minutes for non-load bearing applications' The two-hour fire test was conducted in Pretoria at the Firelab facility by an Independent fire specialist and the report is available on written request.

Pelican Systems provides a Class B (2 hour) fire rated door which is SABS approved and manufactured to suit the JUMBO® FireWALL 63/120/S56 system.

Typical Illustration using JUMBO® FireWALL 63/120/S56 for Drywalling Applications

* **NOTE:** The 14 kg/m³ insulation is optional and not necessary for the 120min fire rating



IDEAL FOR USE IN

Healthcare, Education, Commercial, Residential & Hospitality

Accessories

Class B (120min) SABS approved Pyropanel Fire Door
Sound & Heat Insulation Products - for added sound & heat insulation
Galvanized Steel Sheets - for added security
JUMBO® Corner Beads

BILL OF QUANTITY SPECIFICATION

Pelican Systems JUMBO® FireWall 63/120/S56 (120 minutes fire rating) with overall thickness of 124mm, consisting of JUMBO® stud and track system with 63 x 35mm JUMBO® studs at 600mm centres friction fitted into head track and floor track and clad on both sides with a double layer of 15mm thick Fire Resistant JUMBO® Plasterboard fixed at 200mm centres using 25mm JUMBO® Screws on the base layer and 42mm JUMBO® Screws on the face layer, all plasterboard joints must overlap, all exterior joints to be covered with JUMBO® Tape and finished with two layers of JUMBO® Jointing Plaster applied and lightly sanded down, leaving wall surface prepared for painting, all in accordance with the supplier's recommendations. 14kg/m³ density insulation to be installed in the cavity. Find this spec on Autospec and CCN

* **Note:** Fire resistant JUMBO® boards are just part of a complete fire rated assembly. To achieve a certain fire rating on a JUMBO® FireWALL 63/120/S56 drywall assembly, the complete system from Pelican Systems needs to be used and the assembly needs to be installed according to Pelican Systems installation guidelines.



Pelican Systems is an ISO 9001 : 2008 accredited company certified since 2005 by the TUV Rheinland Group of Companies



jumbo plasterboard



ceiling systems

partitioning systems

opening systems

flooring systems



Durban Branch
(031) 563 7307
Pietermaritzburg Branch
(033) 345 3701
Gauteng Branch
082 212 1372

Distributors:
Zululand
Above All Ceilings & Partitions
(035) 751 1956
Jozini / Kosi Bay
Phumobala
(035) 592 9608
Northern KZN
SAIBA Industries (Pty) Ltd
(034) 375 6051
South Coast
Southgate Ceilings & Partitions
(039) 314 9021
Johannesburg
C + T Ceilings & Partitions Warehouse
(011) 704 6224
Gauteng - Pretoria
C + T Ceilings & Partitions Warehouse
(012) 653 3531

Visit our website on
www.pelican.co.za
Email info@pelican.co.za

creating environments



The question of quality versus speed has always been a contentious one in interior design. Economics and demand require buildings to go up quickly and affordably, which can compromise quality. Jumbo® Plasterboard offers an alternative solution for internal walls and can be used for both residential and commercial ceiling applications, as well as walling and partitioning applications. Jumbo® Plasterboard is also used to form bulkheads, create curved ceilings, floating ceilings and radiused walls. An extremely versatile product which can accommodate innovative and creative design features. Jumbo® Plasterboard achieves the aesthetic requirements of the design without the necessary drying time for alternate wet trade solutions. All our Jumbo products are compatible with our ceiling and partition systems by design.

Features and Benefits

- Quick and easy to install
- Durable
- Recyclable
- Versatile

In addition to these benefits Jumbo® Plasterboard is

- Lighter in weight than most other plasterboards
- Includes a fibre re-inforced core for added strength and flexibility
- Has a narrower taper which reduces the area required for jointing saving both time and costs further
- Two boards are taped together protecting the face of the board

JUMBO® 7mm Plasterboard Square Edge

Recommended for residential ceilings when used in conjunction with our Jumbo Suspension system an extremely level ceiling surface can be achieved. JUMBO® Plasterboard is slightly thicker with added fibres improving both strength and flexibility. Orders and planning are simplified and handling and storage is easier on site as 7mm JUMBO® Plasterboard is stocked in 3 lengths and 1 width only.

Sizes	Weight per Board
2700 x 1200 SE	17.82 kgs
3000 x 1200 SE	19.80 kgs
3600 x 1200 SE	23.76 kgs

100 per stack / 5.50 kgs per m²

JUMBO® 9mm Plasterboard Tapered Edge

Recommended for commercial ceilings and up-market residential ceilings. Floating ceilings and innovative bulkhead designs can be achieved using the 9mm JUMBO® Plasterboard, Jumbo Angles and Shadowline Plaster Trims.

Sizes	Weight per Board
2400 x 1200 TE	20.16 kgs
2700 x 1200 TE	22.68 kgs
3000 x 1200 TE	25.20 kgs
3600 x 1200 TE	30.24 kgs

80 per stack / 7.00 kgs per m²

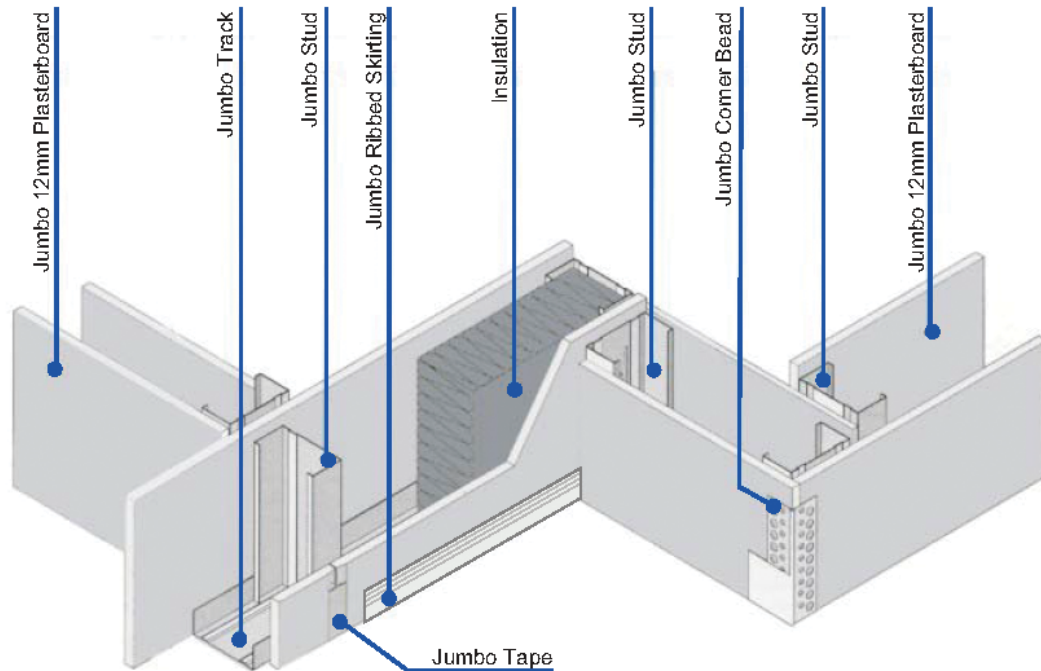
JUMBO® 12mm Plasterboard Tapered Edge

Recommended for both residential and commercial drywall applications. 12mm JUMBO® Plasterboard is exceptionally versatile and lightweight. The 12mm Plasterboard used in conjunction with our systems can provide fire and moisture solutions. True lines and curved radiused walls are also easily achieved.

Sizes	Weight per Board
2400 x 1200 TE	25.92 kgs
2700 x 1200 TE	29.16 kgs
3000 x 1200 TE	32.40 kgs
3600 x 1200 TE	38.88 kgs

70 per stack / 9.00 kgs per m²

Typical Illustration using the Jumbo 12mm Plasterboard for Drywalling Applications



Accessories

- Jumbo Ribbed Skirting
- Jumbo Corner Bead
- Skimming and Jointing Plasters
- Jumbo Ceiling Accessories
- Jumbo Tape

Insulation

- 51mm / Cavity Batt 1200 x 600mm
- 63mm / Cavity Batt 1200 x 600mm
- 102mm / Cavity Batt 1200 x 600mm

Recommended for sound and heat insulation

Creating Greener Environments

Jumbo® Plasterboard is made from pure gypsum, which makes it environmentally friendly and safe for use in Medical and Educational Institutes.





ceiling systems

partitioning systems

opening systems

flooring systems



Head Office / Durban
(031) 563 7307
Pietermaritzburg Branch
(033) 345 3701

For export and all other regions
contact our head office or
one of our distributors.

Distributors:

- Zululand**
Above All Ceiling & Partitioning Systems
(035) 751 1956
- Northern KZN**
SALBA Industries (Pty)
(034) 375 6051/2
- South Coast**
Southgate Ceilings & Partitions
(039) 314 9021
- East London & Border Area**
Almex East London
(043) 736 6334
- Port Elizabeth**
Amalgamated
(041) 451 2846
- Krugersdorp**
Ceiling Dynamix
(011) 660 6584
- Northriding, Johannesburg**
C+T Ceilings & Partitions Warehouse
(011) 704 6224
- Centurion, Pretoria**
C+T Ceilings & Partitions warehouse
(012) 653 3531
- Alrode, Johannesburg**
Supertec Ceilings & Board
(011) 868 4901
- Wynberg, Johannesburg**
Supertec Ceilings & Board
(011) 440 3712
- Hamilton, Bloemfontein**
Smart Boards (Pty) Ltd
(051) 430 8123

Visit our website on www.pelican.co.za
Email info@pelican.co.za



creating environments

Understanding the importance of the finishing of a ceiling and drywall and that it can detract from or enhance the overall finished look we have carefully chosen the plasters to brand JUMBO® and are confident that both the JUMBO® Skimming and JUMBO® Jointing are quality plasters that will produce a quality finish.



JUMBO® Skimming Plaster

Is a multi-purpose interior gypsum plaster especially formulated for skimming on brick, plasterboard and cement with no need for pre-treatment. It provides a smooth, inert, high quality surface to internal walls and ceilings, and a durable base for the application of decorative finishes.

JUMBO® Skimming Plaster allows for a one-step product application to save time and money and deliver a better quality high performance finish.

Features and Benefits:

- Increased spreading rate – goes further and saves you money
- Improved workability and flexibility – saving application time and labour costs
- Superior finish – in both smoothness and whiteness
- Harder once dry, so less prone to chipping, cracking and shrinkage
- Silky smooth finish which requires no sanding prior to painting
- A brilliant white finish allows for improved paint coverage
- Product Shelf life is at least 12 months when stored correctly

New bag size - 25kg - easier product handling and less wastage



JUMBO® Jointing Plaster

A joint filler formulated specially for short setting times. It is designed as a filler for plasterboard systems but can also be used as an interior crack filler and for filling rough plaster surfaces prior to painting.

Features and Benefits:

- 1 hour setting time allows for faster work on site
- 1 hour working time for prepared batch
- Improved coverage of approximately 350g / m² of plasterboard
- Excellent surface for decorating with paint or wallpaper
- Product Shelf life is at least 9 months when stored correctly

Available in 15kg and 25kg bag sizes



JUMBO® plasters are designed to be ultra-tough, ultra-smooth and ultra-white.

JUMBO® plasters dry fast and are easy to apply over masonry, concrete, plasterboard and other surfaces.

Made from the highest quality ingredients, with careful environmental consideration and superior performance and finish JUMBO® Skimming and JUMBO® Jointing are quality plasters well worth trying.



SoundTherm...thermal and acoustic solutions for WALLS



ceiling systems

partitioning systems

opening systems

flooring systems



Head Office / Durban
(031) 563 7307
Pietermaritzburg Branch
(033) 345 3701

For export and all other regions contact our head office or one of our distributors.

Distributors:

Durban
Global Specialised Systems
(031) 468 1234
Zululand
Above All Ceiling & Partitioning Systems
(035) 751 1956
Northern KZN
SAIBA Industries (Pty)
(034) 375 6051/2
South Coast
Southgate Ceilings & Partitions
(039) 314 9021
East London & Border Area
Almex East London
(043) 736 6334
Port Elizabeth
Amalgamated
(041) 451 2846
Krugersdorp
Ceiling Dynamix
(011) 660 6584
Northriding, Johannesburg
C+T Ceilings & Partitions Warehouse
(011) 704 6224
Centurion, Pretoria
C+T Ceilings & Partitions warehouse
(012) 653 3531
Alrode, Johannesburg
Supertec Ceilings & Board
(011) 868 4901
Troyeville, Johannesburg
Supertec Ceilings & Board
082 307 7379
Wynberg, Johannesburg
Supertec Ceilings & Board
(011) 440 3712

Visit our website on www.pelican.co.za
Email info@pelican.co.za



creating environments



Following on from the success of JUMBO Insulation for ceilings, JUMBO SoundTherm brings all the same advantages and more to insulation for WALLS including drywalls, timber frame buildings and steel frame structures.

JUMBO SoundTherm improves indoor comfort by reducing heat loss and/or gain and at the same time improves acoustics reducing the noise that is carried from one room to another.

With the move towards more conscious building and the increasing legislation for the building envelope to achieve energy efficiency it makes perfect sense to use JUMBO SoundTherm to enhance the thermal properties and add to the overall R-Value of the building envelope.

The improved comfort, energy saving and environmental aspects without a doubt far exceed the cost of insulation.

Features and Benefits

- 100% Eco-Friendly
- 100% Recyclable
- Non-allergenic
- Non-itch
- Non-flammable
- Odourless
- Anti-Fungal
- Will not absorb moisture

JUMBO SoundTherm is manufactured from recycled PET (polyester pet bottles) and is therefore classified as 100% recyclable and is 100% eco-friendly.

As such there are no associated health risks working with JUMBO SoundTherm.

JUMBO SoundTherm has sufficient rigidity and mass to stand firm between the walls and will not collapse.

The product composition is mostly thermal fibre with an added fire retardant and a percentage of three dimensional fibres which support the loft recovery.

Each pack has 2 x 600mm lengths per pack for easy installation between the studs.

Thickness (mm)	Width (mm) (2 rolls per Pack)	Length (mm)	m ² Coverage per Roll	Density	K-Value (W/m.k)	Estimated R-Value (m ² .K/W)	Pack Size (mm)	Weight per pack (kg)
51	600 x 2	6000	7.2	12.5	0.046	1.1 - 1.4	1210 x 480	4.68
63	600 x 2	5400	6.48	12	0.046	1.4 - 1.63	1210 x 480	4.86
102	600 x 2	5400	6.48	12	0.046	2.22 - 2.6	1210 x 480	7.78
*						#		*

* Variance +/-10% (PET and carding machines do have slight differences in weight and lofts)
Not yet tested. Formula calculation.

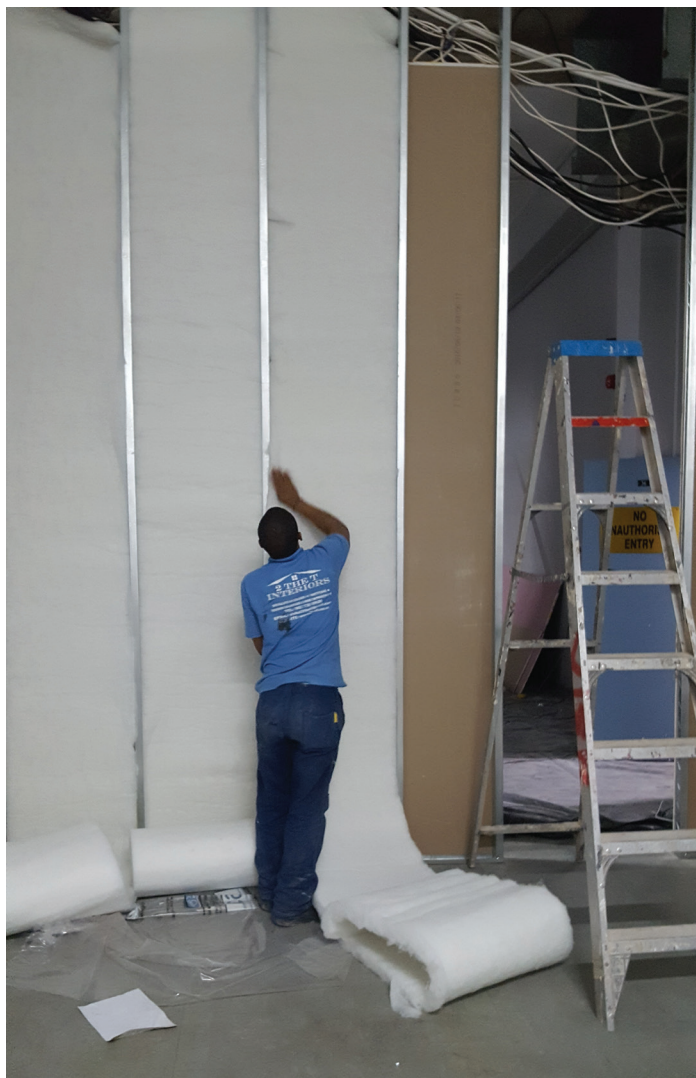
Storage and Care on Site

Always store JUMBO SoundTherm undercover and in dry conditions.

Do not apply heavy pressure or stack heavy objects on top of the product as this may cause permanent damage.

Installation Guidelines

- Insert the JUMBO SoundTherm firmly into the cavity space available.
- Use a sharp blade or knife to cut around any electrical point.
- Ensure there are no gaps to maximise the thermal and acoustic benefits.
- Allow for 1-2 weeks for a full recovery in the loft back to its original size after removal from packaging.



Manufactured by Platinum Fibre
Member of TIPSASA