



www.shospec.co.za

COMPANY PROFILE



South African Building
Interior Systems Association



AAAMSA Fenestration



MBA AWARDS
2011, 2012, 2013,
2015, 2016, 2017,
2018

**SAISC / SASFA
AWARDS**
2013, 2015, 2016,
2019

AWARD OF EXCELLENCE
2012, 2013, 2015, 2018



11 ROGER DE CLERCK PLACE
MKONDENI
PIETERMARITZBURG
TEL: 033 386 0100
EMAIL: admin@shospec.co.za
www.shospec.co.za



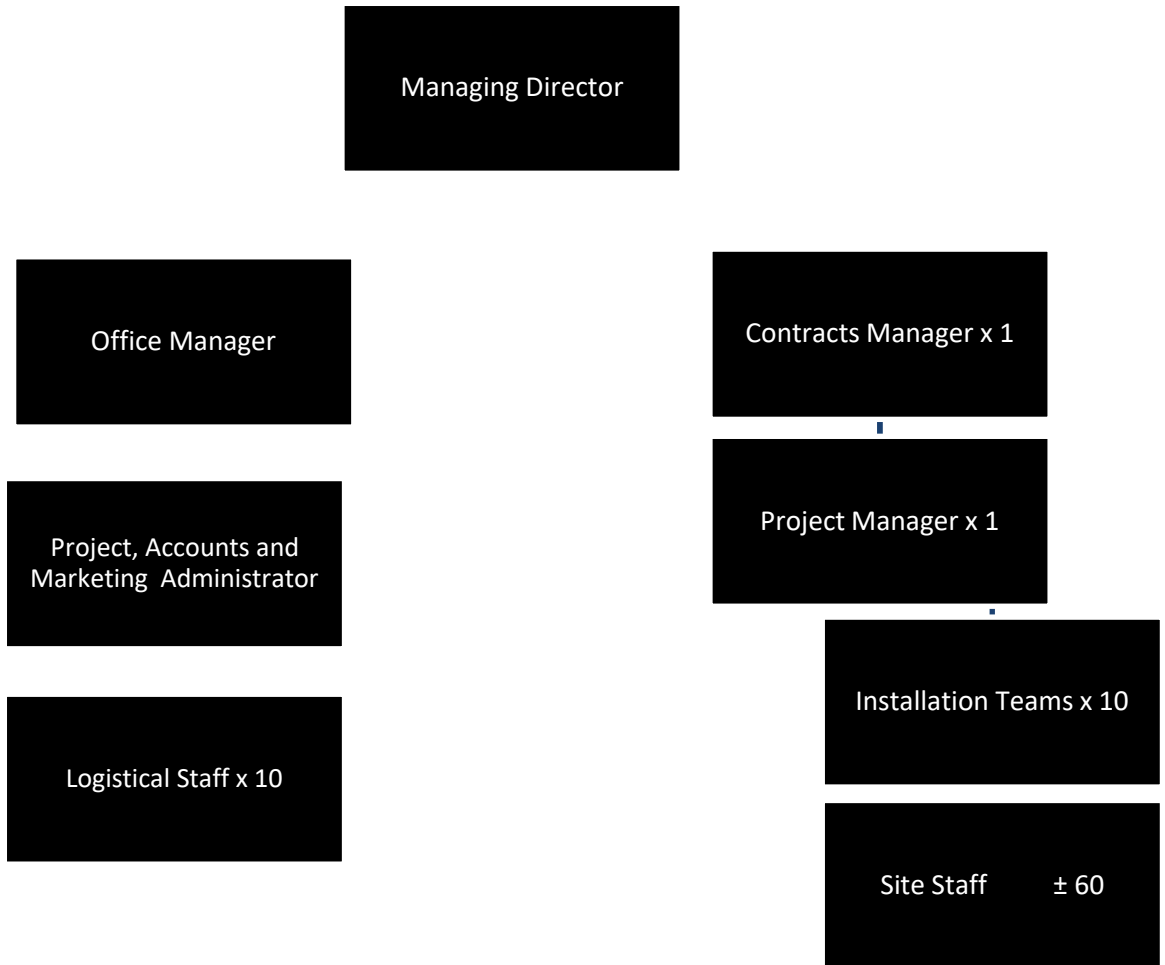
ABOUT SHOSPEC

Pietermaritzburg based industry leaders Shospec have for the past 25 years been successfully providing the industrial and building industries of Kwa-Zulu Natal with quality, high-end Shop-Fitting services, Light Steel Frame structures and successful Turnkey project services.

Headed up by Director Bjorn Kahler and 10 installation crews, with a total staff compliment of around 80 employees. Shospec are committed to delivering the highest standard of Shop Fittings, Light Steel Frame Structures and Turnkey services to their clients no matter how big or small, always remembering that superior service is the key to success and growth. A solid, growing and satisfied client base is proof of Shospec's commitment to quality and service.

BEE STATUS

Being BBEE compliant is of great importance to Shospec as it is a means of recognition for the entire teams' dedication to the sustainability and support they give to their employees, sub- contractors and their local community.



SHOSPEC (Pty) Ltd, Reg No: 1999/027305/07 - VAT No: 4820188052 – BEE Contribution: LEVEL 3

Director: B.G.J. Kahler



MBA AWARDS
2011, 2012, 2013,
2015, 2016, 2017,
2018

**SAISC / SASFA
AWARDS**
2013, 2015, 2016

AWARD OF EXCELLENCE
2012, 2013, 2015, 2018

SHOSPEC SERVICES

CEILINGS

Shospec offers two types of suspended ceilings namely Screw-Up Skimmed Ceilings & Lay In Exposed T Systems with the option of either acoustic or non-acoustic tiles.



BULKHEADS

Shospec offers a wide variety of Gypsum Decorative Bulkheads and Light Troughs in an assortment of innovative designs including curved, straight or stepped options for shop interiors, supermarkets, office blocks, factories, shopping centers and homes.



SHOSPEC SERVICES

PARTITIONING

Shospec supplies and installs Partitioning in shops, office blocks, factories and shopping centers using Demountable partitioning or drywall partitioning systems which can be finished with paint or wallpaper.

All partitioning can be custom built to the clients' needs including Glazing and a large selection of door options. Drywall options include industrial, fire- proof and acoustic applications.



BULLET PROOFING

Shospec supplies and installs a wide selection of quality choices for bullet proofing. These include Pay windows, Bullet Resistant Glass counters, Security Bullet Resistant doors, Steel Lined Partitioning and Bullet Proof Glazing. Shospec's years of experience and up to date industry knowledge in Bullet Proofing guarantees outstanding service.



ACCESS FLOORING

Shospec supplies and installs 600 x 600 panel access flooring in a stringer supply system with the anti-static HPL (high pressed laminate) covering. Providing versatile flooring solutions to easily install and maintain all your communication, electrical and mechanical needs beneath the raised access floor.

SHOSPEC SERVICES

HUFCOR MOVABLE WALLS

Shospec is an authorized installer of Hufcor Movable Walls in KZN. Hufcor Movable Walls are used throughout the world in conferencing facilities, boardrooms, schools, office blocks and convention centers as are known for their superior quality and innovative designs.

The Hufcor range offers an extensive array of movable partitions with a variety of finishes and designs to divide your space with acoustic or non-acoustic dividers. Shospec offers Hufcor Movable Walls in the following series: 7 000, 5 000, 3 000 and in Glass. Other imported models are also available to suit specific needs.

Each of these series is available in Paired, Individual Omni-Directional or Individual Center Stack designs. Suspended from an overhead track system and often described as air walls/ movable/ flat panels, Hufcor Movable Walls are a series of interlocking panels which look like a permanent wall. A selection of Face Covers are available to co-ordinate with interior décor. Accessories to provide further versatility include Pass Doors, Pocket Doors and Chalk and Tack Boards.



SHOPFRONT, WINDOWS & DOORS

All shop-fronts and windows used at Shospec are manufactured from the highest quality epoxy-coated or anodized aluminum and comply with National Building Regulations. Designs can be manufactured as per client's individual specifications.



SHOSPEC SERVICES

LIGHT STEEL FRAME BUILDING

Light steel frame has been around for 50+ years but has only lately become available to the South African shores. Shospec entered into the Steel Frame market in 2009 and are certain that this is the way forward when it comes to building new structures. Light Steel Frame Building offers quality, cost efficiency and speed of erection for low-rise residential and non-residential buildings.

The benefits:

Highest strength-to-weight ratio of any building material

Galvanized steel resists rust and corrosion

Bolts, screws and welds resist wind and seismic stress better than nails

Walls are designed to exceed Government prescribed energy efficient standards

Improved product quality with vertical, true and straight surfaces

More design flexibility and superior quality finishes

Multiple access holes in each panel simplify wiring and plumbing

Up to 40% saving in construction time

Non- combustible

Reduction in site supervision and labor

90% lighter than brick resulting in reduced delivery and transport impact on the environment

Environmentally friendly with a far greater reduced carbon footprint than traditional building.



SHOSPEC SERVICES

TOILET CUBICLES

Shospec supplies and installs toilet partitions, which are economical and quick to install and meet the demands for a neat appearance which is hygienic and easy to clean. The partitions may be covered in a variety of shades of melamine or mellawood.

Nonstandard sizes can be made to measure and door openings can be adapted for wheelchairs.



TURNKEY SERVICES

Shospec's Turnkey Projects range from minor alterations through to complete face-lifts and revamps. Shospec prides its self with being able to complete a project in a minimum amount of time. Shospec, as project managers and managers of the clients' own sub-contractors, over-hauled three banks in the space of eight weeks.



CHARITABLE

SOBANTU CRECH

The George Kubheka Children's Centre was a dream of Christ Church Sobantu to serve the local township community at Sobantu - it is reported to be the oldest township in Pietermaritzburg, situated in the eastern side of the city. Shospec assisted in their dream by installing new ceilings to the value of ± R35 000.00 free of charge.



COMMUNITY CHEST

By supporting the Pietermaritzburg & District Community Chest over the past few years Shospec have helped make a positive impact on communities, bringing relief and enhancement to the lives of thousands of people in distress. Shospec won an awards for being a top donor for 2015/2016.



CSI - REACH OUT

Shospec is a proud and committed supporter of Reach Out in France Township in Pietermaritzburg. Reach Out is an organization which aims to help children and the elderly who cannot help themselves. Many of the children in the Ambleton, Shenstone and Slangspruit areas (which Reach Out services) are AID's orphans who have to fend for themselves. Shospec donates monthly to Reach Out in an attempt to alleviate some of the suffering of these children and elderly members of society.

CREIGHTON HOSPITAL PRE-SCHOOL

During the building of the new nurses and doctors block at St Apollinaris Hospital in Creighton in 2011, Shospec undertook to revamp the hospital's pre-school. The make-over included a new jungle-gym, new tables and chairs, educational aids, posters and toys for the children. New floors and a fresh coat of paint also helped to transform the little school into a happy place for learning. Shospec is proud to have identified, and in a meaningful way, assisted with a need in the community.



LINPARK HIGH SCHOOL RUGBY UNIFORM

In May 2010 Shospec kitted out the Linpark High School first rugby team and supplied them with accessories needed to compete proudly with other schools in Pietermaritzburg.

EAST COAST RADIO – TOY STORY

Every year Shospec donates money for this good cause and challenges other local construction companies to do the same.



AWARDS

Steel Award 2019 – MITEK LSFB Category Commendation.

Nominator / Steelwork Contractor & Steel Erector – Department of Health Townhill Office Park.

MBA Excellence In Construction Award 2018 – Highly commended

Single Residential Buildings – House Wolhuter – Hilton, Kwazulu Natal

MBA Excellence In Construction Award 2017 – 1st place

Residential Alterations Additions & Renovations – House Bredin

MBA Excellence In Construction Award 2017 – Highly commended

Small works – Niel Woolridge Motorsport Workshop

MBA Excellence In Construction Award 2016 – 1st place

Dabmar Manufacturing Plant Dundee & Sumitomo Rubber SA, Ladysmith

Steel Award 2015 – Saint-Gobain LSF Category Joint winner.

House Declercq, Mount Verde, Hilton

MBA Excellence In Construction Award 2015 – Highly commended.

House Declercq, Mount Verde, Hilton

MBA Excellence In Construction Award 2013 (Sub-Contractor & Service Provider)

Winner - NTT Volkswagen & Audi EL

MBA Excellence in Construction Awards 2012 (Health Category Under R40mil)

Shospec proudly accepted the highest award for the Excellence in Health Facilities category for our groundbreaking work at the New Staff Accommodation at St Apollinaris Hospital in Creighton.

MBA Excellence in Construction Award 2012

A highly commended received in the Sub-Contractors/ and Service Provider category for our representative work at First National Bank Edendale Mall.

MBA Excellence in Construction Awards 2011

Winner of the single residential award for House Kahler

Steel Award 2016 – Safintra Factory & Warehouse Category Commendation.

Dabmar Manufacturing Plant Dundee

Steel Award 2013 - Stewarts & Lloyds LSF National Category winner, LSFB Contractor

NTT, Audi New Showroom, East London

The Federated Employers' Mutual Assurance Company

Award of Excellence in 2015 3rd place in the Med Risk Small Employer for Durban region.

Award of Excellence in 2013 1st place in the Low Risk Small Employer for Durban region.

Award of Excellence in 2011 in the Low Risk Small Employer for the Durban region – 2nd Place

Award of Excellence in 2010 in the Low Risk Small Employer for the Durban region – 1st Place



11 ROGER DE CLERCK PLACE
 MKONDENI
 PIETERMARITZBURG
 TEL: 033 386 0100
 FAX: 033 386 0104
 EMAIL: admin@shospec.co.za
www.shospec.co.za

CERTIFICATES & ASSOCIATION

SASFA Certificate

A member of the South African light steel frame building association.

KZN Master Builders & Allied Industries Association Membership Certificate (MBA)

The MBA association represents the interests of members and provides them with specialist support services in order to maintain business success. Shospec has been presented with a Bronze award for 20 Years of affiliation.

NHBRC - National Home Builders Association Certificate

The National Home Builders Registration Council (NHBRC) is a regulator body of the home building industry of which Shospec are a member.

SABISA Certificate / Association of Architectural Aluminum Manufacturers of SA (AAAMSA)

SABISA is a Trade Association which represents the Ceiling & Partitioning Industry

CIDB Certificate of Contractor Registration (grade 7 GB)

The Construction Industry Development Board (CIDB) - a Schedule 3A public entity. Thus, allowing Shospec to tender for contracts up to the value of R40 Million.

Pietermaritzburg Chamber of Business Membership Certificate (PCB)

The Pietermaritzburg Chamber of Business (PCB) is a voluntary association of business enterprises which Shospec are apart of.

SHOSPEC (Pty) Ltd, Reg No: 1999/27305/07 - VAT No: 4820 188 052

Director: B.G.J. Kahler



MBA AWARDS
 2011, 2012, 2013,
 2015, 2016, 2017,
 2018

SAISC / SASFA AWARDS
 2013, 2015, 2016

AWARD OF EXCELLENCE
 2012, 2013, 2015, 2018